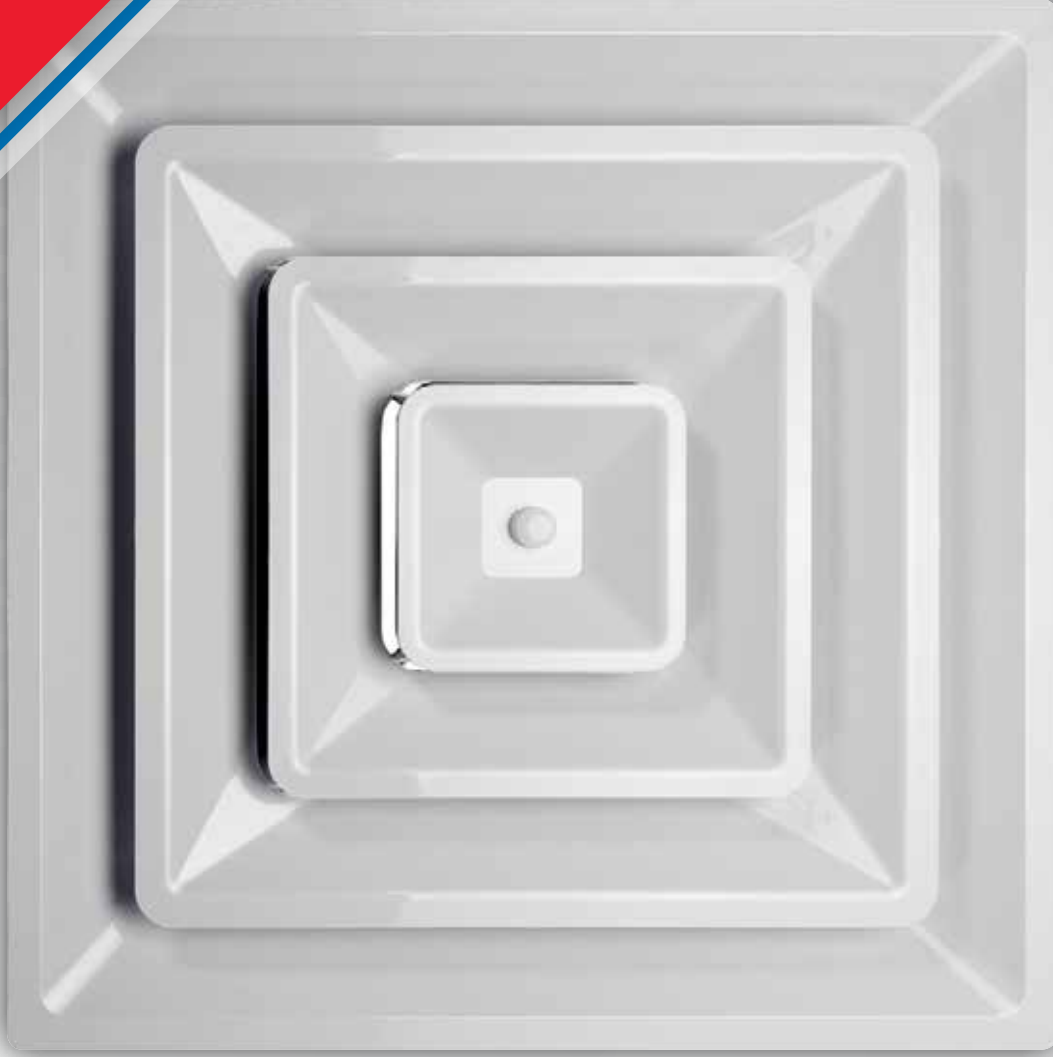


2019 PRODUCT CATALOG



HAVACo

TECHNOLOGIES, INC



TIME SAVING
TECHNOLOGY



SUPERIOR
QUALITY PLASTIC



INNOVATIVE AIR
DISTRIBUTION PRODUCTS

MADE IN
USA



OUR COMPANY

HaVACo Technologies, Inc. (located in Erie, Pennsylvania) designs and manufactures superior quality plastic, American-Made heating, ventilation, and air conditioning products with the intent to solve installation, distribution or on-going maintenance concerns. Whether it is ease of install, ease of use, shipping and warehouse benefits, or product longevity, HaVACo products are the solution for all of your commercial and residential projects. Our superior quality plastic will not rust, corrode, discolor, or fade. HaVACo Technologies, Inc. is currently developing additional products in the duct fitting and diffuser line categories to continue to offer the most innovative air distribution products in the industry. Our products are readily available and our warehouse is fully stocked for package, LTL, and truckload orders. We encourage you to experience the HVAC air distribution product revolution... Experience HaVACo Technologies, Inc.



2' X 2' LAY-IN SUPPLY & RETURN (QUICK CONNECT)

2' X 2' LAY-IN 3 CONE DIFFUSER

- Easy Attach Knob to remove just the diffuser for simple cleaning (Patent Pending)
- 6" - 12" Inlet Size Boot Models Available: 6" (HT-2X2-SPL6), 8" (HT-2X2-SPL8), 10" (HT-2X2-SPL10), and 12" (HT-2X2-SPL12)
- Fully stocked and immediately available in White or Black: 6" (HT-2X2-SPL6-BK), 8" (HT-2X2-SPL8-BK), 10" (HT-2X2-SPL10-BK), 12" (HT-2X2-SPL12-BK)
- Also available with HaVACo Specific Insulated Back Add "IB" to product number
- HaVACo Rotary Dampers available for select models/sizes

- Won't Rust, Corrode, Discolor, or Fade
- Fast & Efficient Cleanability



2' X 2' LAY-IN BORDERED DIFFUSER

- Easy Attach Knob to remove just the diffuser center for simple cleaning (Patent Pending)
- 2-Way, 3-Way, and 4-Way options available
- 6" - 14" Inlet Size Boot Models Available: 6" (HT-2X2-BSPL6), 8" (HT-2X2-BSPL8), 10" (HT-2X2-BSPL10), 12" (HT-2X2-BSPL12), and 14" (HT-2X2-BSPL14)
- Fully stocked and immediately available in White or Black: 6" (HT-2X2-BSPL6-BK), 8" (HT-2X2-BSPL8-BK), 10" (HT-2X2-BSPL10-BK), 12" (HT-2X2-BSPL12-BK), 14" (HT-2X2-BSPL14-BK)
- Also available with HaVACo Specific Insulated Back. Add "IB" to product number

2' X 2' LAY-IN PLAQUE DIFFUSER

- Magnetic Engagement System- Four (4) pre-installed coated magnets (Over 40 lbs. of Pull Force), easy to remove just plaque face for simple cleaning (Patent Pending)
- 6" - 12" Inlet Size Boot Models Available: 6" (HT-2X2-PSPL6), 8" (HT-2X2-PSPL8), 10" (HT-2X2-PSPL10), and 12" (HT-2X2-PSPL12)
- Cut away Bulls-Eye Back with 6" - 16" Inlet Size Option Available (HT-2X2-PSPLBE). Add Standard or HaVACo Collar
- Stocked and available in White or Black: 6" (HT-2X2-PSPL6-BK), 8" (HT-2X2-PSPL8-BK), 10" (HT-2X2-PSPL10-BK), 12" (HT-2X2-PSPL12-BK)
- Also available with HaVACo Specific Insulated Back. Add "IB" to product number

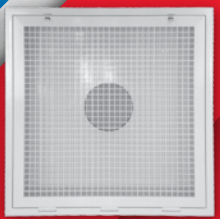
Contact HaVACo
for custom colors

ABS Material is less
conductive than metal
(Which means it is more
resistant to sweating)

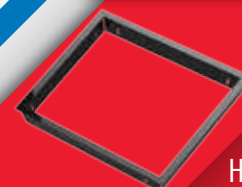


2' X 2' LAY-IN RETURN

- 2' X 2' Lay-In Louver (HT-2X2-RTN) and Egg Crate (HT-2X2-ERTN) Return Models
- Clip/Hinge to remove just the grille for cleaning (Patent Pending)
- Holds 20" X 20" X 1" or 20" X 20" X 2" filters (FILTERS NOT INCLUDED)
- Cut away Bulls-Eye Back with 6" - 16" Inlet Size Options. Add Standard or HaVACo Collar
- Available in White or Black (HT-2X2-RTN-BK) (HT-2X2-ERTN-BK)
- Contact HaVACo for custom colors



2' X 2' SURFACE MOUNT FRAME

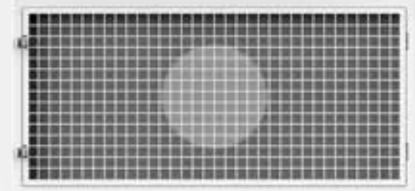


HT-2X2-SMF

Allows you to use HaVACo products in fixed ceilings
Available in White or Black (HT-SMF-BK)

1' X 2' LAY-IN RETURN (QUICK CONNECT)

- 1' X 2' Egg Crate Return Model
- Easy clip / hinge to remove just the grille for cleaning
- Two part assembly with built in plenum box
- Cut away Bulls-Eye Back with 6" - 10" Inlet Size Options (HT-1X2-ERTNBE). Add Standard or HaVACo Collar
- Available in White or Black (HT-1X2-ERTNBE-BK)



QUICK CONNECT DIFFUSERS WITH BOOTS

- Low Profile Diffuser 12" diameter available in Round (R1) or Square (S1)
- Includes Ceiling Boot available in 6" (HT-G6B-R1), 8" (HT-GB-R1), or 8" - 7" - 6" (HT-GRB-R1) Reducing models
- Easy Attach Knob for quick install and removal of just diffuser for cleaning or painting the ceiling
- Simply clean with mild soap and water
- Standard White option available
- Optional Butterfly or Rotary Damper Models



QUICK ZIP BOOT



HT-GB-R1



ROTARY DAMPER



HT-GB-S1



HT-GRB-R1



REDUCING
8" - 7" - 6"

6"

8"



EASY ATTACH KNOB

- High Impact Plastic (Won't rust, corrode, discolor or fade)
- UV Resistant
- Includes four (4) Quick Zips for easy install
- Air Diffusion Council's recommended 2" boot height - Code Required for Flex
- Passes UL2043 Testing
- Included with 12" Diffuser

QUICK CONNECT CAPITAL CROWN DIFFUSERS



HT-CCGB-R1

- Crown Molding Profile Round 12" Diffuser
- Inlet boot size 8"
- Standard White
- Optional Butterfly or Rotary damper models
- Easy Attach Knob (Patent Pending)
- Includes Ceiling Boot: 8", 6" (HT-CCG6B-R1) or an 8" - 7" - 6" Reducing Boot (HT-CCGRB-R1)



HT-CCGB-S1

- Crown Molding Profile Square 12" Diffuser
- Inlet boot size 8"
- Standard White
- Optional Butterfly or Rotary damper models
- Easy Attach Knob (Patent Pending)
- Includes Ceiling Boot: 8", 6" (HT-CCG6B-S1) or an 8" - 7" - 6" Reducing Boot (HT-CCGRB-S1)



HT-3CCGB-S1

- 3-WAY Crown Molding Profile Square 12" Diffuser
- Inlet boot size 8"
- Standard White
- Optional Butterfly or Rotary damper models
- Easy Attach Knob (Patent Pending)
- Includes Ceiling Boot: 8", 6" (HT-3CCG6B-S1) or an 8" - 7" - 6" Reducing Boot (HT-3CCGRB-S1)

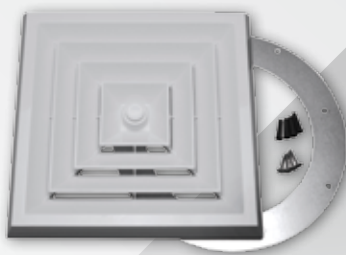


HT-2CCGB-S1

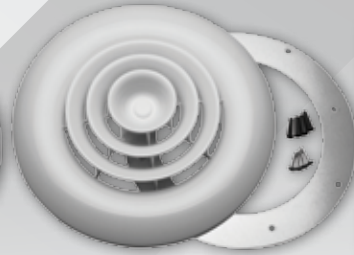
- 2-WAY Crown Molding Profile Square 12" Diffuser
- Inlet boot size 8"
- Standard White
- Optional Butterfly or Rotary damper models
- Easy Attach Knob (Patent Pending)
- Includes Ceiling Boot: 8", 6" (HT-2CCG6B-S1) or an 8" - 7" - 6" Reducing Boot (HT-2CCGRB-S1)



MAGNETIC RETROFIT



HT-RFK-S1

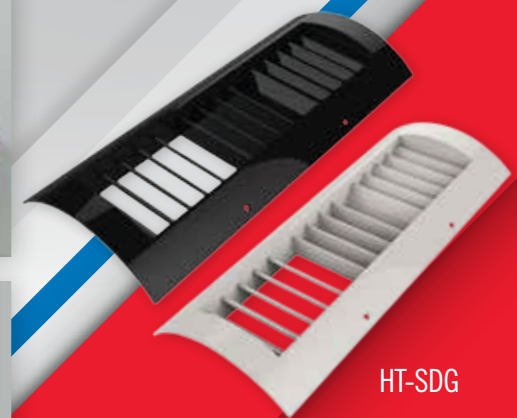


HT-RFK-R1

- Magnetic RetroFit Kit features either Round or Square Diffuser
- Includes Galvanized Ring and four (4) Pack of Screws with Anchors
- Round Diffuser Covers up to 8" Round Ceiling Boot or Duct Opening
- Square Diffuser covers up to 10" X 10" Flush Bath Fan Opening
- Standard White
- Magnetic Engagement System (four (4) preinstalled, coated magnets with over 16+ lbs pull force)



SPIRAL DUCT GRILLES



HT-SDG

- Features fourteen (14) fixed diffuser fins for equal left, middle, right air dispersion
- 4" X 12" equivalent for 8" and other corresponding diameter duct
- Available in White or Black (HT-SDG-BK)

WYES, CONNECTORS, AND REDUCERS



HTY-12

HTY-8

- Snap Together Wyes easily customized in the field 12" - 10" - 8" (HTY-12) and 8" - 7" - 6" - 5" (HTY-8) models
- Easily cut to size
- These two models can replace (12) different metal wyes thus saving substantial time and warehousing space

HTY 8 CUTS TO	8" - 6" - 6"	8" - 6" - 5"	8" - 5" - 5"	7" - 6" - 6"	7" - 6" - 5"	7" - 5" - 5"
HTY-12 CUTS TO	12" - 10" - 10"	12" - 10" - 8"	12" - 8" - 8"	10" - 10" - 10"	10" - 10" - 8"	10" - 8" - 8"



- 6" and 8" Flex Duct Connector models
- Features two eyelets to easily suspend duct connectors
- High Density Plastic
- Features flex duct retention ring for more secure installs



HTC-6



HTC-8

- 8" - 7" - 6" Reducer
- High Density Plastic
- Easily cut to size
- Features flex duct retention ring for more secure installs



HTRD-876

QUICK CONNECT START COLLARS



5"



HT-0503



HT-0504

6"



HT-0603



HT-0604

7"



HT-0703

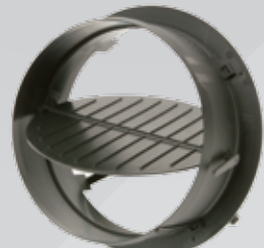


HT-0704

8"



HT-0803

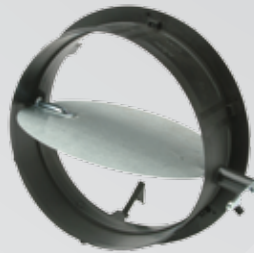


HT-0804

10"



HT-1003



HT-1004

12"



HT-1203



HT-1204

- Available in 5" - 12" sizes listed above
- Optional pre-installed damper models available
- UL CLASSIFIED 2043
- Installs in Seconds!
- High Impact Plastic
- No sharp metal tabs to bend - Reduces risk of injury
- Won't dent or rust



- Less conductive than metal - More resistant to sweating
- Two sided adhesive gasket and four (4) Quick Zips fasten to sheet metal & duct board or insulated board up to 2" thick
- Air Diffusion Council's 2" Collar Length Required for Code
- Easily pre-install your flex duct before getting into an attic or crawlspace
- Contractor/OEM Preferred - Multiple Applications



FUTURE PRODUCTS

- Diverter / Deflector
- 10", 12", 14" Rotary Damper
- 2' X 2' Perforated Supply/Return Grille with Molded Fiberglass Plenum/Shroud
- Standard Rectangular Residential Registers
- Standard 6" Residential Register with Boot
- Linear/Slot Diffuser
- Additional Products in the R & D Stages

*Please contact info@havacotechnologies.com to submit your product ideas for consideration

SCAN FOR INFO!





TIME SAVING
TECHNOLOGY



SUPERIOR
QUALITY PLASTIC



INNOVATIVE AIR
DISTRIBUTION PRODUCTS



www.havacotechnologies.com

HAVACo
TECHNOLOGIES, INC

3058 W 22ND ST, ERIE PA 16506
TOLL FREE: 1-844-836-6793
DIRECT: (814) 878-5509
ORDER EMAIL: sales@havacosales.com
FAX: (844) 333-0707

MADE IN
USA